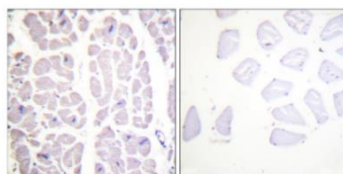


IKK-alpha/beta (Phospho-Ser180/181) Antibody [#8A0440]

Catalog Number:	8A0440
Concentration:	1mg/ml
Molecular Weight:	84 Kd
Origin of Antibody:	Rabbit
Swiss-Prot No.:	O15111/O14920
NCBI Gene Symbol:	CHUK
Other Names:	CHUK; Conserved helix-loop-helix ubiquitous kinase; I kappa-B kinase alpha; I-kappa-B kinase 1; I kappa B kinase; I kappa B kinase; IKK-A; IKK-alpha; IKK1; IKKA; Inhibitor of nuclear factor kappa-B kinase alpha subunit; kinase IKK-alpha; NFKB1A; Nuclear factor NFkappa
All Sites:	H:S180/S181 M:S180/S181 R:S180/S181
Storage/Stability:	Store at -20°C/1 year
Form of Antibody:	Rabbit IgG in phosphate buffered saline (without Mg ²⁺ and Ca ²⁺), pH 7.4, 150mM NaCl, 0.02% sodium azide and 50% glycerol.
Immunogen:	The antiserum was produced against synthesized peptide derived from human IKK-alpha/beta around the phosphorylation site of Ser180/181.
Purification:	The antibody was affinity-purified from rabbit antiserum by affinity-chromatography using epitope-specific phosphopeptide. The antibody against non-phosphopeptide was removed by chromatography using non-phosphopeptide corresponding to the phosphorylation site.
Specificity:	MER/SKY (Phospho-Tyr749/681) Antibody detects endogenous levels of MER/SKY only when phosphorylated at Tyr749/681.
Reactivity:	Human, Mouse, Rat.
Applications:	WB: 1:500~1:1000 IHC: 1:50~1:100 ELISA: 1:20000
References:	Tsuyoshi Shuto, PNAS, Jul 2001; 98: 8774. Bing-Chang Chen, J. Immunol., Oct 2004; 173: 5219 - 5228. Jennifer Harris, J. Immunol., Aug 2006; 177: 2527 - 2535

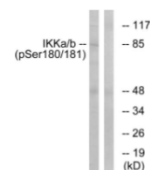
Application Images:

Figure1 (IHC)



Immunohistochemistry analysis of paraffin-embedded human heart, using IKK-alpha/beta (Phospho-Ser180/181) Antibody. The picture on the right is blocked with the phospho peptide

Figure 2 (WB)



Western blot analysis of lysates from HepG2 cells treated with TNF 20ng/ml 5', using IKK-alpha/beta (Phospho-Ser180/181) Antibody. The lane on the right is blocked with the phospho peptide.