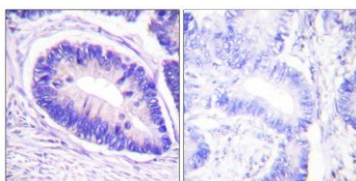


MYPT1 (Phospho-Thr853) Antibody [#8A0518]

Catalog Number:	8A0518
Concentration:	1mg/ml
Molecular Weight:	115 Kd
Origin of Antibody:	Rabbit
Swiss-Prot No.:	O14974
NCBI Gene Symbol:	PPP1R12A
Other Names:	MBS; Myosin phosphatase target subunit 1; PPP1R12A
All Sites:	H:T853 M:T852 R:T855
Storage/Stability:	Store at -20°C/1 year
Form of Antibody:	Rabbit IgG in phosphate buffered saline (without Mg^{2+} and Ca^{2+}), pH 7.4, 150mM NaCl, 0.02% sodium azide and 50% glycerol.
Immunogen:	The antiserum was produced against synthesized peptide derived from human MYPT1 around the phosphorylation site of Thr696.
Immunogen Range:	621-670
Purification:	The antibody was affinity-purified from rabbit antiserum by affinity-chromatography using epitope-specific phosphopeptide. The antibody against non-phosphopeptide was removed by chromatography using non-phosphopeptide corresponding to the phosphorylation site.
Specificity:	MYPT1 (Phospho-Thr853) Antibody detects endogenous levels of MYPT1 only when phosphorylated at Thr853.
Reactivity:	Human, Mouse, Rat.
Applications:	WB: 1:500~1:1000 IHC: 1:50~1:100 ELISA: 1:1000
References:	Kevin B. Atkins, Am J Physiol Heart Circ Physiol, Jul 2007; 293: H402 - H408. Allison M. Given, Am J Physiol Cell Physiol, Jan 2007; 292: C432 - C439. Haiying Zhang, Circ. Res., Mar 2007; 100: 730 - 737. Mikiharu Yoshida, J. Biochem. (Tokyo), Feb 1988; 103: 380 - 385.

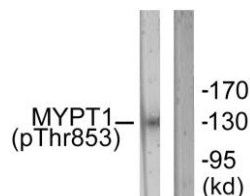
Application Images:

Figure1 (IHC)



Immunohistochemistry analysis of paraffin-embedded human colon carcinoma, using MYPT1 (Phospho-Thr853) Antibody. The picture on the right is blocked with the phospho peptide.

Figure 2 (WB)



Western blot analysis of lysates from NIH/3T3 cells, using MYPT1 (Phospho-Thr853) Antibody. The lane on the right is blocked with the phospho peptide.