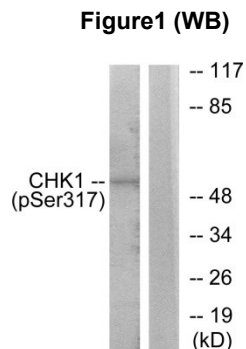


Chk1(Phospho-Ser317)Antibody [#8A7041]

Catalog Number:	8A7041
Concentration:	1mg/ml
Molecular Weight:	54 Kd
Origin of Antibody:	Rabbit
Swiss-Prot No.:	O14757
NCBI Gene Symbol:	CHK1
Other Names:	CHEK1; Chk1; kinase Chk1
All Sites:	H:S317 M:S317 R:S317
Storage/Stability:	Store at -20°C/1 year
Form of Antibody:	Rabbit IgG in phosphate buffered saline (without Mg^{2+} and Ca^{2+}), pH 7.4, 150mM NaCl, 0.02% sodium azide and 50% glycerol.
Immunogen:	The antiserum was produced against synthesized peptide derived from human Chk1 around the phosphorylation site of Ser317.
Purification:	The antibody was affinity-purified from rabbit antiserum by affinity-chromatography using epitope-specific phosphopeptide. The antibody against non-phosphopeptide was removed by chromatography using non-phosphopeptide corresponding to the phosphorylation site.
Specificity:	Chk1 (Phospho-Ser317) Antibody detects endogenous levels of Chk1 only when phosphorylated at Ser317.
Reactivity:	Human, Mouse, Rat
Applications:	WB: 1:500~1:1000 ELISA: 1:5000
References:	Zhang YW, et al. (2005) Mol Cell; 19(5): 607-18. Bhoumik A, et al. (2005) Mol Cell; 18(5): 577-87. Rocha S, et al. (2005) EMBO J. Clarke CA, et al. (2005) Biochem J. Yu X, et al. (2004) Mol Cell Biol; 24(21): 9478-86.

Application Images:



Western blot analysis of lysates from MCF7 cells, using Chk1 (Phospho-Ser317) Antibody. The lane on the right is blocked with the phospho peptide.