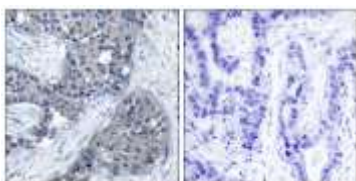


EIF4E (Phospho- SER209) Antibody [#8A7067]

Catalog Number:	8A7067
Concentration:	1mg/ml
Molecular Weight:	115 Kd
Origin of Antibody:	Rabbit
Swiss-Prot No.:	P06730
NCBI Gene Symbol:	EIF4E
Other Names:	Eukaryotic translation initiation factor 4E; eIF-4E; eIF4E; mRNA cap-binding protein; eIF-4F 25 kDa subunit; EIF4E; EIF4EL1; EIF4F
All Sites:	H:S209 M:S209 R:S209
Storage/Stability:	Store at -20°C/1 year
Form of Antibody:	Rabbit IgG in phosphate buffered saline (without Mg^{2+} and Ca^{2+}), pH 7.4, 150mM NaCl, 0.02% sodium azide and 50% glycerol.
Immunogen:	The antiserum was produced against synthesized peptide derived from human eIF4E around the phosphorylation site of Ser209.
Immunogen Range:	168-217
Purification:	The antibody was affinity-purified from rabbit antiserum by affinity-chromatography using epitope-specific phosphopeptide. The antibody against non-phosphopeptide was removed by chromatography using non-phosphopeptide corresponding to the phosphorylation site.
Specificity:	eIF4E (Phospho-Ser209) Antibody detects endogenous levels of eIF4E only when phosphorylated at Ser209.
Reactivity:	Human, Mouse, Rat.
Applications:	WB: 1:500~1:1000 IHC: 1:50~1:100 ELISA: 1:20000
References:	Li BD, et al. (1998) Ann Surg; 227(5): 756-763. Altmann M, et al. (1989) Nucleic Acids Res; 17(18): 7520. De Gregorio E, et al. (2001) RNA; 7(1): 106-113. Gu W, et al. (2004) Nucleic Acids Res; 32(15): 4448-

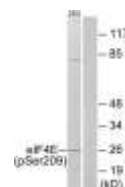
Application Images:

Figure1 (IHC)



Immunohistochemistry analysis of paraffin-embedded human breast carcinoma, using eIF4E (Phospho-Ser209) Antibody. The picture on the right is blocked with the phospho peptide.

Figure 2 (WB)



Western blot analysis of lysates from 293 cells treated with Anisomycin 25ug/ml 30', using eIF4E (Phospho-Ser209) Antibody. The lane on the right is blocked with the phospho peptide.