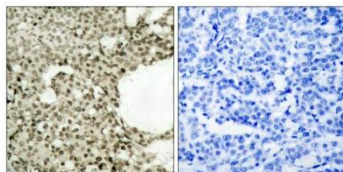


## STAT1 (Phospho-Ser727) Antibody [#8A7221]

<b>Catalog Number:</b>	8A7221
<b>Concentration:</b>	1mg/ml
<b>Molecular Weight:</b>	87 Kd
<b>Origin of Antibody:</b>	Rabbit
<b>Swiss-Prot No.:</b>	P42224
<b>NCBI Gene Symbol:</b>	STAT1
<b>Other Names:</b>	Signal transducer and activator of transcription 1-alpha/beta; Transcription factor ISGF-3 components p91/p84
<b>All Sites:</b>	H:S727 M:S727 R:S727
<b>Storage/Stability:</b>	Store at -20°C/1 year
<b>Form of Antibody:</b>	Rabbit IgG in phosphate buffered saline (without $Mg^{2+}$ and $Ca^{2+}$ ), pH 7.4, 150mM NaCl, 0.02% sodium azide and 50% glycerol.
<b>Immunogen:</b>	The antiserum was produced against synthesized peptide derived from human STAT1 around the phosphorylation site of Ser727.
<b>Purification:</b>	The antibody was affinity-purified from rabbit antiserum by affinity-chromatography using epitope-specific phosphopeptide. The antibody against non-phosphopeptide was removed by chromatography using non-phosphopeptide corresponding to the phosphorylation site.
<b>Specificity:</b>	STAT1 (Phospho-Ser727) Antibody detects endogenous levels of STAT1 only when phosphorylated at Ser727.
<b>Reactivity:</b>	Human, Mouse, Rat.
<b>Applications:</b>	WB: 1:500~1:1000 IHC: 1:50~1:100 ELISA: 1:10000
<b>References:</b>	Schindler C., Proc. Natl. Acad. Sci. U.S.A. 89:7836-7839(1992). Livingston R.J., Submitted (DEC-2004) to the EMBL/GenBank/DBJ databases. Hillier L.W., Nature 434:724-731(2005).

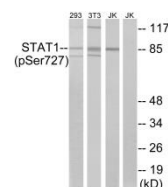
### Application Images:

**Figure1 (IHC)**



Immunohistochemistry analysis of paraffin-embedded human breast carcinoma, using STAT1 (Phospho-Ser727) Antibody. The picture on the right is blocked with the phospho peptide.

**Figure 2 (WB)**



Western blot analysis of lysates from 293 cells, 3T3 cells treated with UV (15mins) and Jurkat cells treated with eto (25uM, 24hours), using STAT1 (Phospho-Ser727) Antibody. The lane on the right is blocked with the phospho peptide.