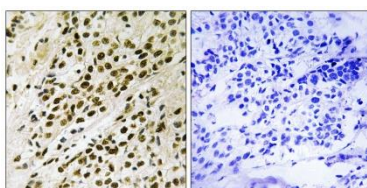


## MAPKAPK5(Phospho-Thr182)Antibody [#8A8364]

<b>Catalog Number:</b>	8A8364
<b>Concentration:</b>	1mg/ml
<b>Molecular Weight:</b>	54 Kd
<b>Origin of Antibody:</b>	Rabbit
<b>Swiss-Prot No.:</b>	8IW41
<b>NCBI Gene Symbol:</b>	MAPKAPK5
<b>Other Names:</b>	MAP kinase-activated protein kinase 5; MAPK-activated protein kinase 5; MAPK5; MAPKAP kinase 5; p38-regulated/activated protein kinase; PRAK
<b>All Sites:</b>	H:T182 M:T182
<b>Storage/Stability:</b>	Store at -20°C/1 year
<b>Form of Antibody:</b>	Rabbit IgG in phosphate buffered saline (without $Mg^{2+}$ and $Ca^{2+}$ ), pH 7.4, 150mM NaCl, 0.02% sodium azide and 50% glycerol.
<b>Immunogen:</b>	The antiserum was produced against synthesized peptide derived from human MAPKAPK5 around the phosphorylation site of Thr182.
<b>Immunogen Range:</b>	148-197
<b>Purification:</b>	The antibody was affinity-purified from rabbit antiserum by affinity-chromatography using epitope-specific phosphopeptide. The antibody against non-phosphopeptide was removed by chromatography using non-phosphopeptide corresponding to the phosphorylation site.
<b>Specificity:</b>	MAPKAPK5 (Phospho-Thr182) Antibody detects endogenous levels of MAPKAPK5 only when phosphorylated at Thr182.
<b>Reactivity:</b>	Human, Mouse.
<b>Applications:</b>	WB: 1:500~1:1000 IHC: 1:50~1:100 ELISA: 1:1000
<b>References:</b>	New L., EMBO J. 17:3372-3384(1998). Sudo T., Biochem. Biophys. Res. Commun. 269:521-525(2000). Dephoure N., Proc. Natl. Acad. Sci. U.S.A. 105:10762-10767(2008)

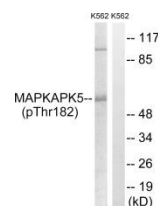
### Application Images:

**Figure1 (IHC)**



Immunohistochemistry analysis of paraffin-embedded human breast carcinoma, using MAPKAPK5 (Phospho-Thr182) Antibody. The picture on the right is blocked with the phospho peptide.

**Figure 2 (WB)**



Western blot analysis of lysates from K562 cells treated with  $Na_3VO_4$  0.3nM 40', using MAPKAPK5 (Phospho-Thr182) Antibody. The lane on the right is blocked with the phospho peptide.