

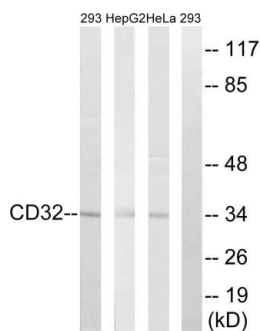
CD32 (Ab-292) Antibody [8B0626]

Catalog Number:	8B0626
Concentration:	1mg/ml
Molecular Weight:	34 Kd
Origin of Antibody:	Rabbit
Swiss-Prot No.:	P31994
NCBI Gene Symbol:	FCGR2B
Other Names:	CD32, CDW32, FC gamma receptor IIB, FC-gamma RII, FC-gamma RII-B, FC-gamma-RIIB, FCG2, FCG2B, FCGR2, FCGR2B, FCRII, FCgammaRIIB, IGFR2, IGG FC receptor II beta, IGG FC receptor II-B, LY-17, Low affinity immunoglobulin gamma FC region receptor II precursor, Low affinity immunoglobulin gamma FC region receptor II-B precursor
Storage/Stability:	Store at -20°C/1 year
Form of Antibody:	Rabbit IgG in phosphate buffered saline (without Mg ²⁺ and Ca ²⁺), pH 7.4, 150mM NaCl, 0.02% sodium azide and 50% glycerol.
Immunogen:	The antiserum was produced against synthesized non-phosphopeptide derived from human CD32 around the phosphorylation site of tyrosine 292 (I-T-Y ^P -S-L).
Purification:	The antibody was affinity-purified from rabbit antiserum by affinity-chromatography using epitope-specific immunogen.
Specificity:	CD32 (Ab-292) antibody detects endogenous levels of total CD32 protein.
Reactivity:	Human, Mouse, Rat
Applications:	WB: 1:500~1:1000 ELISA: 1:1000
References:	

Belen de Andrés. Blood, Aug 1997; 90: 1267 - 1274.
M Groger. J. Immunol., Feb 1996; 156: 1549.
Diana Metes. Blood, Apr 1998; 91: 2369 - 2380.
Belen de Andres. Blood, Oct 1998; 92: 2823 - 2829

Application Images:

Figure1 (WB)



Western blot analysis of lysates from 293, HepG2, and HeLa cells, treated with PMA 125ng/ml 30', using CD32 Antibody. The lane on the right is blocked with the synthesized peptide.