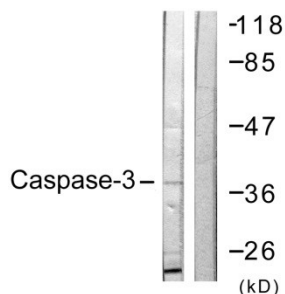


Caspase 3 (Ab-150) Antibody [8B0835]

Catalog Number:	8B0835
Concentration:	1mg/ml
Molecular Weight:	31 Kd
Origin of Antibody:	Rabbit
Swiss-Prot No.:	P42574
NCBI Gene Symbol:	CASP3
Other Names:	Apopain precursor, CASP-3, CPP-32, CPP32, Caspase-3, Cysteine protease CPP32, EC 3.4.22.-, ICE3, SCA-1, SREBP cleavage activity 1, Yama protein
Storage/Stability:	Store at -20°C/1 year
Form of Antibody:	Rabbit IgG in phosphate buffered saline (without Mg ²⁺ and Ca ²⁺), pH 7.4, 150mM NaCl, 0.02% sodium azide and 50% glycerol.
Immunogen:	The antiserum was produced against synthesized non-phosphopeptide derived from human Caspase 3 around the phosphorylation site of serine 150 (C-R-S ^p -L-T).
Purification:	The antibody was affinity-purified from rabbit antiserum by affinity-chromatography using epitope-specific immunogen.
Specificity:	Caspase 3 (Ab-150) antibody detects endogenous levels of total Caspase 3 protein.
Reactivity:	Human, Mouse, Rat
Applications:	WB: 1:500~1:1000 IHC: 1:50~1:100 ELISA: 1:1000
References:	Daniela Sciaky, J. Immunol., Apr 2000; 164: 3806. Randolph Hutter, Circulation, Apr 2004; 109: 2001 - 2008. Andreas Hartmann, PNAS, Mar 2000; 97: 2875. Keith F. Izban, Am. J. Pathol., May 1999; 154: 1439.

Application Images:

Figure1 (WB)



Western blot analysis of lysates from NIH/3T3 cells, treated with Etoposide 25uM 24h, using Caspase 3 Antibody. The lane on the right is blocked with the synthesized peptide.