

XFD610 amine

Catalog Number: 70063

Unit Size: 1 mg

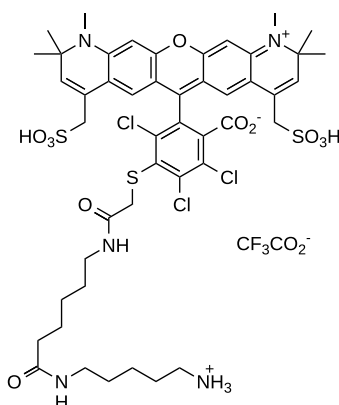
Product Details

| | |
|--------------------|--|
| Storage Conditions | Freeze (< -15 °C), Minimize light exposure |
| Expiration Date | 12 months upon receiving |

Chemical Properties

| | |
|------------------|---------|
| Appearance | Solid |
| Molecular Weight | 1068.52 |
| Soluble In | DMSO |

Chemical Structure



Spectral Properties

| | |
|-----------------------|--------|
| Excitation Wavelength | 611 nm |
| Emission Wavelength | 629 nm |

Applications

XFD610, manufactured by AAT Bioquest, is a red-fluorescent dye that is structurally similar to Alexa Fluor™ 610 (Thermo Fisher). The dye exhibits high photostability and strong fluorescence, making it well-suited for advanced imaging applications and flow cytometry. Its water solubility and pH-independent fluorescence over a broad range (pH 4–10) ensure consistent performance under diverse experimental conditions. XFD610 enables reproducible labeling with high signal intensity, providing reliable results in fluorescence-based assays. Additionally, it serves as a robust alternative to Texas Red™, offering improved optical properties for experiments requiring enhanced fluorescence output.

XFD610 amine is a carbonyl-reactive building block for modifying carboxylic groups in the presence of activators such as EDC or DCC, or activated esters like NHS esters, through the formation of stable amide bonds. Additionally, it can be used as an amine donor for enzymatic transamination labeling.