

## Xylazine-KLH Conjugate

Catalog Number: 50621

Unit Size: 1 mg

### Product Details

---

Storage Conditions Freeze (< -15 °C), Minimize light exposure

Expiration Date 24 months upon receiving

### Unit Details

---

Units 50621 (1 mg)

Reconstitution Volume Add 1mL ddH<sub>2</sub>O to make 1mg/mL in phosphate buffer

### Chemical Properties

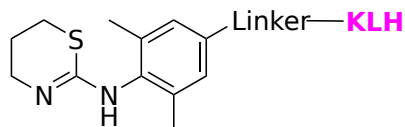
---

Appearance Solid white

Molecular Weight N/A

Soluble In Water

Chemical Structure



### Spectral Properties

---

Excitation Wavelength N/A

Emission Wavelength N/A

### Applications

---

Xylazine-KLH conjugate is an excellent antigen for developing anti-Xylazine antibodies for ELISA-based assays and tests for detecting Xylazine. Xylazine is a non-opioid sedative or tranquilizer. It is not approved for use in people. It is commonly used in veterinary medicine for sedation, anesthesia, muscle relaxation, and analgesia in animals such as horses, cattle, and other mammals. In veterinary anesthesia, it is often combined with ketamine. Veterinarians also use xylazine as an emetic, especially in cats.