

Product Information Sheet

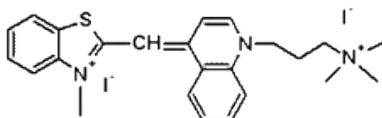
Ordering Information

Product Number:	17571
Product Name:	TWO-PRO™-1 [equivalent to TO-PRO®-1] *CAS# 157199-59-2*
Unit Size:	0.2 mL
Storage Conditions:	<-15 °C and kept from light and moisture
Expiration Date:	12 months upon receiving

Chemical and Spectral Properties

Molecular Weight: 645.38

Chemical Structure:



Soluble in: N/A

Excitation Wavelength: 515

Emission Wavelength: 531

Application Notes

TWO-PRO™-1 is chemically equivalent to TO-PRO®-1 (TO-PRO® is the trademark of Invitrogen). TWO-PRO™-1 is a carbocyanine dimer with green fluorescence similar to FITC. It is cell-impermeant and easily distinguished from Cy5 and rhodamines as a nuclear counterstain and dead cell indicator. It is non-fluorescent in the absence of nucleic acids, and generates a very bright fluorescence signal upon binding to DNA. TWO-PRO™-1 gives strong and selective nuclear staining in cultured cells and in paraffin sections. Simultaneous labeling with cell-permeable Nuclear Red™ LCS1 dye and cell-impermeant TWO-PRO™-1 can be used to assess cell viability. TWO-PRO™-1 and Nuclear Red™ both have much greater extinction coefficients than that of DNA-bound propidium iodide.