

Product Information Sheet

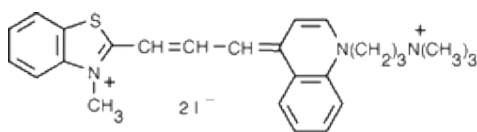
Ordering Information

Product Number: 17572
Product Name: TWO-PRO™-3 [equivalent to TO-PRO®-3] *CAS# 157199-63-8*
Unit Size: 0.2 mL
Storage Conditions: <-15 °C and kept from light and moisture
Expiration Date: 12 months upon receiving

Chemical and Spectral Properties

Molecular Weight: 671.42

Chemical Structure:



Soluble in: N/A

Excitation Wavelength: 642

Emission Wavelength: 661

Application Notes

TWO-PRO™-3 is chemically equivalent to TO-PRO®-3 (TO-PRO® is the trademark of Invitrogen). TWO-PRO™-3 is a carbocyanine dimer with far-red fluorescence similar to Cy® 5 dyes. It is cell-impermeant and easily distinguished from fluorescein and rhodamine as a nuclear counterstain and dead cell indicator. It is non-fluorescent in the absence of nucleic acids, and generates a very bright fluorescence signal upon binding to DNA. TWO-PRO™-3 gives strong and selective nuclear staining in cultured cells and in paraffin sections. Simultaneous labeling with cell-permeable Nuclear Green™ LCS1 dye and cell-impermeant TWO-PRO™-3 can be used to assess cell viability. TWO-PRO™-3 and Nuclear Green™ both have much greater extinction coefficients than that of DNA-bound propidium iodide.