

## mFluor™ Yellow 630 SE

Catalog number: 1170  
Unit size: 1 mg

Component	Storage	Amount
mFluor™ Yellow 630 SE	Freeze (< -15 °C), Minimize light exposure	1 vial (1 mg)

### OVERVIEW

mFluor™ Yellow 630 dye is a unique dye that is well excited by the green-yellow laser at 561 nm to give red fluorescence. mFluor™ Yellow 630 dye is water-soluble, and the protein conjugates prepared with mFluor™ Yellow 630 dye are bright. mFluor™ Yellow 630 dye and conjugates are excellent yellow laser reagents for both flow cytometry research and fluorescence imaging applications.

### PREPARATION OF STOCK SOLUTIONS

*Unless otherwise noted, all unused stock solutions should be divided into single-use aliquots and stored at -20 °C after preparation. Avoid repeated freeze-thaw cycles.*

#### 1. Protein stock solution (Solution A)

Mix 100 µL of a reaction buffer (e.g., 1 M sodium carbonate solution or 1 M phosphate buffer with pH ~9.0) with 900 µL of the target protein solution (e.g. antibody, protein concentration >2 mg/mL if possible) to give 1 mL protein labeling stock solution.

**Note** The pH of the protein solution (Solution A) should be  $8.5 \pm 0.5$ . If the pH of the protein solution is lower than 8.0, adjust the pH to the range of 8.0-9.0 using 1 M sodium bicarbonate solution or 1 M pH 9.0 phosphate buffer.

**Note** The protein should be dissolved in 1X phosphate buffered saline (PBS), pH 7.2-7.4. If the protein is dissolved in Tris or glycine buffer, it must be dialyzed against 1X PBS, pH 7.2-7.4, to remove free amines or ammonium salts (such as ammonium sulfate and ammonium acetate) that are widely used for protein precipitation.

**Note** Impure antibodies or antibodies stabilized with bovine serum albumin (BSA) or gelatin will not be labeled well. The presence of sodium azide or thimerosal might also interfere with the conjugation reaction. Sodium azide or thimerosal can be removed by dialysis or spin column for optimal labeling results.

**Note** The conjugation efficiency is significantly reduced if the protein concentration is less than 2 mg/mL. For optimal labeling efficiency the final protein concentration range of 2-10 mg/mL is recommended.

#### 2. mFluor™ Yellow 630 SE stock solution (Solution B)

Add anhydrous DMSO into the vial of mFluor™ Yellow 630 SE to make a 10 mM stock solution. Mix well by pipetting or vortex.

**Note** Prepare the dye stock solution (Solution B) before starting the conjugation. Use promptly. Extended storage of the dye stock solution may reduce the dye activity. Solution B can be stored in freezer for two weeks when kept from light and moisture. Avoid freeze-thaw cycles.

### SAMPLE EXPERIMENTAL PROTOCOL

This labeling protocol was developed for the conjugate of Goat anti-mouse IgG with mFluor™ Yellow 630 SE. You might need further optimization for your particular proteins.

**Note** Each protein requires distinct dye/protein ratio, which also depends on the properties of dyes. Over labeling of a protein could detrimentally affects its binding affinity while the protein conjugates of low dye/protein ratio gives reduced sensitivity.

#### Run conjugation reaction

1. Use 10:1 molar ratio of Solution B (dye)/Solution A (protein) as the starting point: Add 5 µL of the dye stock solution (Solution B, assuming the dye stock solution is 10 mM) into the vial of the protein solution (95 µL of Solution A) with effective shaking. The concentration of the protein is ~0.05 mM assuming the protein concentration is 10 mg/mL and the molecular weight of the protein is ~200KD.

**Note** We recommend to use 10:1 molar ratio of Solution B (dye)/Solution A (protein). If it is too less or too high, determine the optimal dye/protein ratio at 5:1, 15:1 and 20:1 respectively.

2. Continue to rotate or shake the reaction mixture at room temperature for 30-60 minutes.

#### Purify the conjugation

The following protocol is an example of dye-protein conjugate purification by using a Sephadex G-25 column.

1. Prepare Sephadex G-25 column according to the manufacture instruction.
2. Load the reaction mixture (From "Run conjugation reaction") to the top of the Sephadex G-25 column.
3. Add PBS (pH 7.2-7.4) as soon as the sample runs just below the top resin surface.
4. Add more PBS (pH 7.2-7.4) to the desired sample to complete the column purification. Combine the fractions that contain the desired dye-protein conjugate.

**Note** For immediate use, the dye-protein conjugate need be diluted with staining buffer, and aliquoted for multiple uses.

**Note** For longer term storage, dye-protein conjugate solution need be concentrated or freeze dried.

### EXAMPLE DATA ANALYSIS AND FIGURES

#### Characterize the Desired Dye-Protein Conjugate

The Degree of Substitution (DOS) is the most important factor for characterizing dye-labeled protein. Proteins of lower DOS usually have weaker fluorescence intensity, but proteins of higher DOS tend to have reduced fluorescence too. The optimal DOS for most antibodies is recommended between 2 and 10 depending on the properties of dye and protein. The following steps are used to determine the DOS of mFluor™ Yellow 630 SE labeled proteins.

#### Measure absorption

To measure the absorption spectrum of a dye-protein conjugate, it is recommended to keep the sample concentration in the range of 1-10 µM depending on the extinction coefficient of the dye.

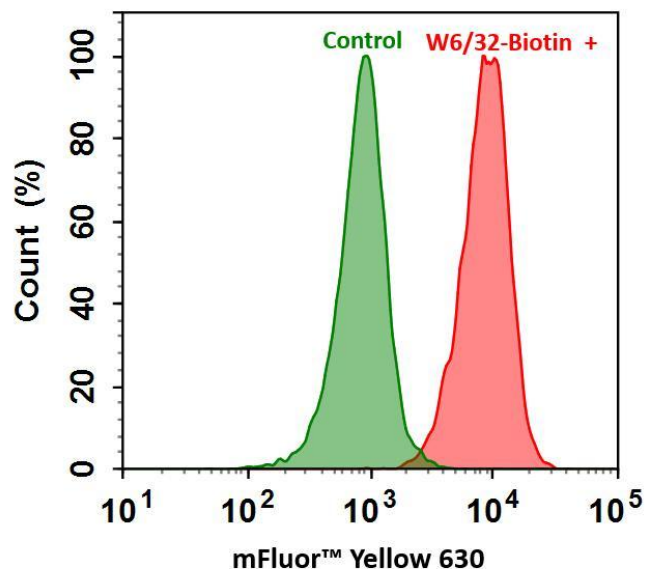
#### Read OD (absorbance) at 280 nm and dye maximum absorption ( $\lambda_{max}$ = 627 nm for mFluor™ Yellow 630 dyes)

For most spectrophotometers, the sample (from the column fractions) need be diluted with de-ionized water so that the OD values are in the range of 0.1 to 0.9. The O.D. (absorbance) at 280 nm is the maximum absorption of protein while 627 nm is the maximum absorption of mFluor™ Yellow 630 SE. To obtain accurate DOS, make sure that the conjugate is free of the non-conjugated dye.

#### Calculate DOS

You can calculate DOS using our tool by following this link:

<https://www.aatbio.com/tools/degree-of-labeling-calculator>



**Figure 1.**

Flow cytometry analysis of HL-60 cells stained with (Red) or without (Green) 1ug/ml Anti-Human HLA-ABC-Biotin and then followed by mFluor™ Yellow 630-streptavidin conjugate.

#### DISCLAIMER

AAT Bioquest provides high-quality reagents and materials for research use only. For proper handling of potentially hazardous chemicals, please consult the Safety Data Sheet (SDS) provided for the product. Chemical analysis and/or reverse engineering of any kit or its components is strictly prohibited without written permission from AAT Bioquest. Please call 408-733-1055 or email [info@aatbio.com](mailto:info@aatbio.com) if you have any questions.