

ReadiPrep™ Tissue Protein Extraction Buffer

 Catalog number: 67303
 Unit size: 100 mL

Component	Storage	Amount (Cat No. 67303)
ReadiPrep™ Tissue Protein Extraction Buffer	Refrigerated (2-8 °C)	100 mL

OVERVIEW

ReadiPrep™ Tissue Protein Extraction Buffer is a detergent-based lysis buffer specifically formulated for the efficient extraction of total proteins from mammalian tissues. This protein extraction solution enables rapid solubilization of cytoplasmic and membrane proteins, saving time and preserving protein integrity.

Ideal for researchers conducting Western blotting, ELISA, enzyme activity assays, and quantitative proteomics, the ReadiPrep™ buffer delivers high-yield and high-quality protein samples. It maintains protein stability and function, ensuring reproducible results across various downstream workflows. ReadiPrep™ delivers reliable performance for both soft and fibrous tissues, making it a go-to solution for tissue protein extraction in biomedical and life science research.

SAMPLE EXPERIMENTAL PROTOCOL

1. Weigh tissue samples. Use a ratio of 1 gm of tissue to 20 mL of ice-cold ReadiPrep™ Tissue Protein Extraction Buffer. The volume can be adjusted if a more concentrated protein extract is required.
2. Add an appropriate amount of ice-cold ReadiPrep™ Tissue Protein Extraction Buffer to the tissue sample and homogenize.
3. Centrifuge the sample at 10000 x g for 10 minutes to pellet the tissue debris.
4. Collect the supernatant and continue with downstream analysis for further purification.

Important Notes

1. ReadiPrep™ Tissue Protein Extraction Buffer is compatible with standard protein assays such as Amplitude® Colorimetric BCA Protein Quantitation Assay Kit (Cat# 11115).
2. ReadiPrep™ Tissue Protein Extraction Buffer has some protease inhibitors but if required more PMSF or other protease inhibitor cocktail can be added in the formulation.

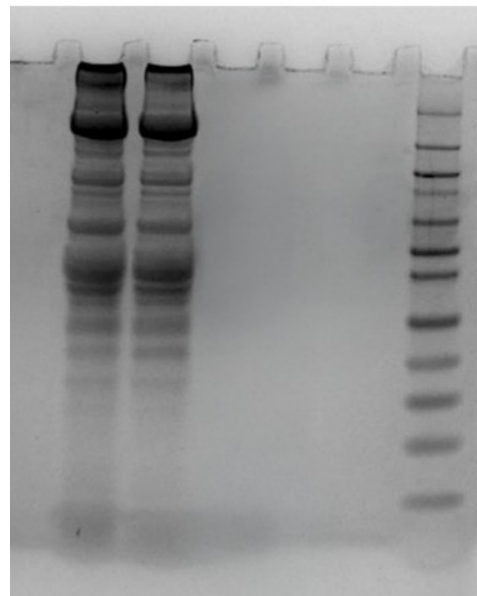
EXAMPLE DATA ANALYSIS AND FIGURES


Figure 1. Tissue protein extraction using ReadiPrep™ Tissue Protein Extraction Buffer. Tissue samples (10 ug protein shown in duplicates along with ladder) were processed using the ReadiPrep™ Tissue Protein Extraction Buffer and analyzed by gel electrophoresis.

DISCLAIMER

AAT Bioquest provides high-quality reagents and materials for research use only. For proper handling of potentially hazardous chemicals, please consult the Safety Data Sheet (SDS) provided for the product. Chemical analysis and/or reverse engineering of any kit or its components is strictly prohibited without written permission from AAT Bioquest. Please call 408-733-1055 or email info@aatbio.com if you have any questions.