

Congo Red-Biotin Conjugate

Catalog Number: 23068

Unit Size: 1 mg

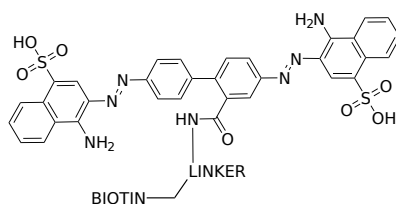
Product Details

Storage Conditions	Freeze (< -15 °C), Minimize light exposure
Expiration Date	24 months upon receiving

Chemical Properties

Appearance	Solid red
Molecular Weight	965.08
Soluble In	Water

Chemical Structure



Spectral Properties

Excitation Wavelength	N/A
Emission Wavelength	N/A

Applications

Congo Red has been used as a common qualitative staining method for the identification of amyloids in vitro and in tissue sections. Congo Red-Biotin is an excellent building block to develop Congo Red-based amyloid assays and tests. AAT Bioquest offers the largest collection of streptavidin conjugates that are paired with biotin probes for biological detections. The investigation of the amyloid formation is currently one of the most important tasks in the neurological field. Research in this area involves not only understanding how amyloidosis develops and how to prevent amyloid plaque formation but also investigating functional amyloids. In amyloidosis diseases, amyloids can be detected in the kidney, liver, brain and other human and animal organs. The development of neurodegenerative human diseases, such as Alzheimer's disease and Parkinson's disease, is probably the consequence of accumulation of insoluble amyloid plaques in the nerve tissue.