

CypHer5E Maleimide

Catalog Number: 21913

Unit Size: 1 mg

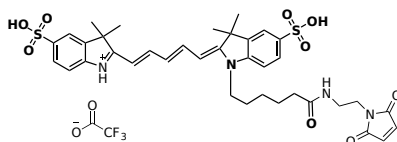
Product Details

Storage Conditions	Freeze (< -15 °C), Minimize light exposure
Expiration Date	24 months upon receiving

Chemical Properties

Appearance	Solid blue
Molecular Weight	853.05
Soluble In	DMSO

Chemical Structure



Spectral Properties

Excitation Wavelength	643 nm
Emission Wavelength	660 nm

Applications

CypHer5E maleimide is an excellent building block for developing site-specific pH probes. It can be readily conjugated to thiol-containing biomolecules (such as antibodies, peptides and thiol-modified oligos). CypHer5E is a red laser-excitable, pH-sensitive cyanine dye derivative that can be used to study most classes of cell surface receptors which internalize into the endocytic pathway when activated by a ligand. CypHer5E maleimide is a flexible, generic fluorophore that can be coupled to a receptor or epitope tag antibody and monitors neutral to acidic intracellular events. CypHer5E has an excitation peak that perfectly matches the red laser at 633 nm of He-Ne laser and 647 nm of red laser and an emission peak at ~670 nm.